



HRL-0130-1 HEATLESS
DESICCANT AIR DRYER
GENERAL ARRANGEMENT

TOLERANCES UNLESS
OTHERWISE SPECIFIED:

FRACTIONS = ± 1/4 "
ANGLES = ± 3°
INCHES = ± 1/2 "
FINISH = 250

THE SPECIFICATIONS AND DRAWINGS DISCLOSED HEREIN ARE THE SOLE PROPERTY OF ALTEC AIR, AND SHALL NOT BE COPIED OR USED AS THE BASIS FOR SALE OR MANUFACTURE WITHOUT EXPRESS WRITTEN PERMISSION.

REVISION LOG

REV.	ECO.	DESCRIPTION	DATE	APPROVED
C	0876	PRODUCTION UPDATES	7/2/2019	WS

DRAWING NO.

AT20-453

REV.
C

DRAWN: MR

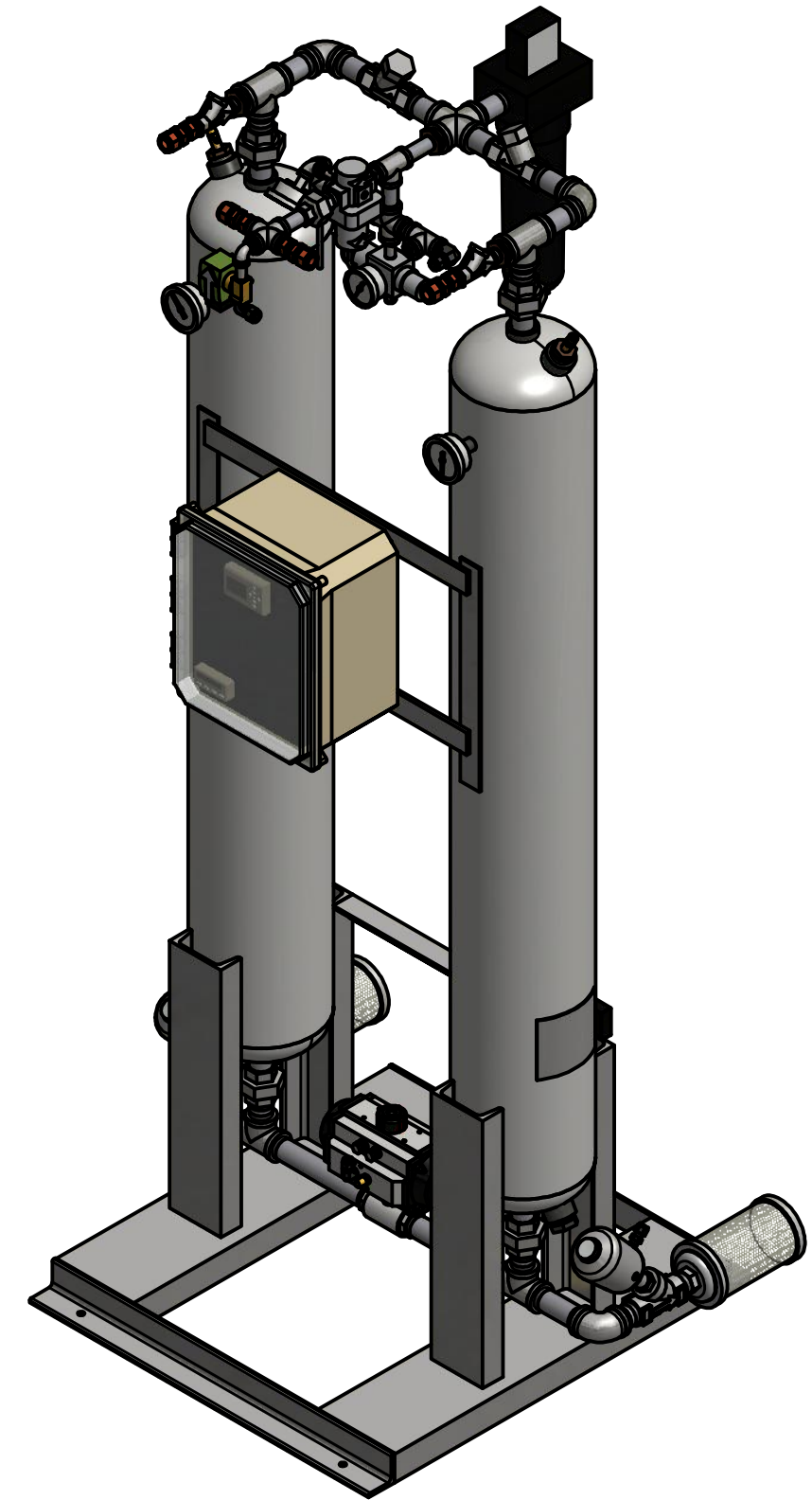
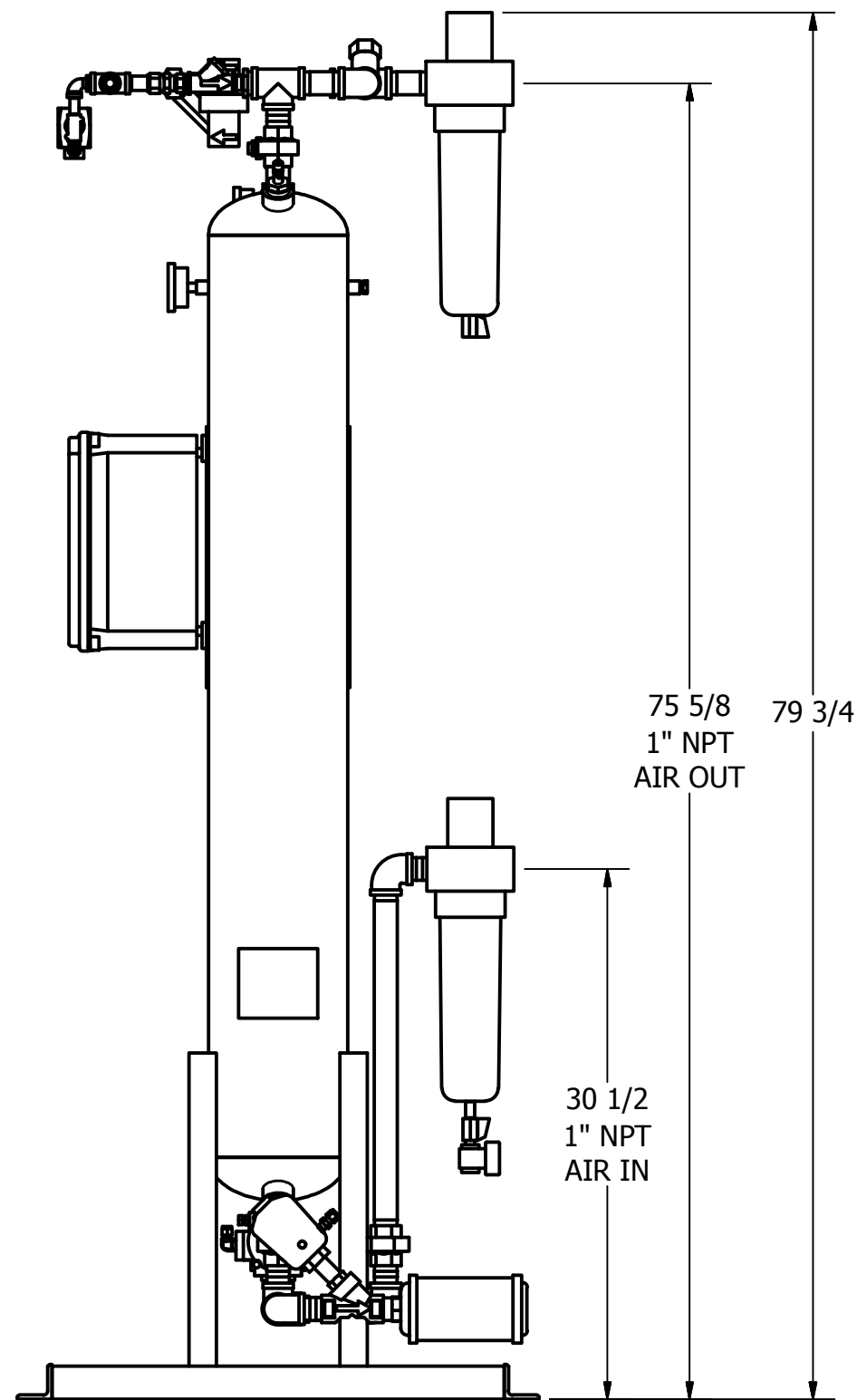
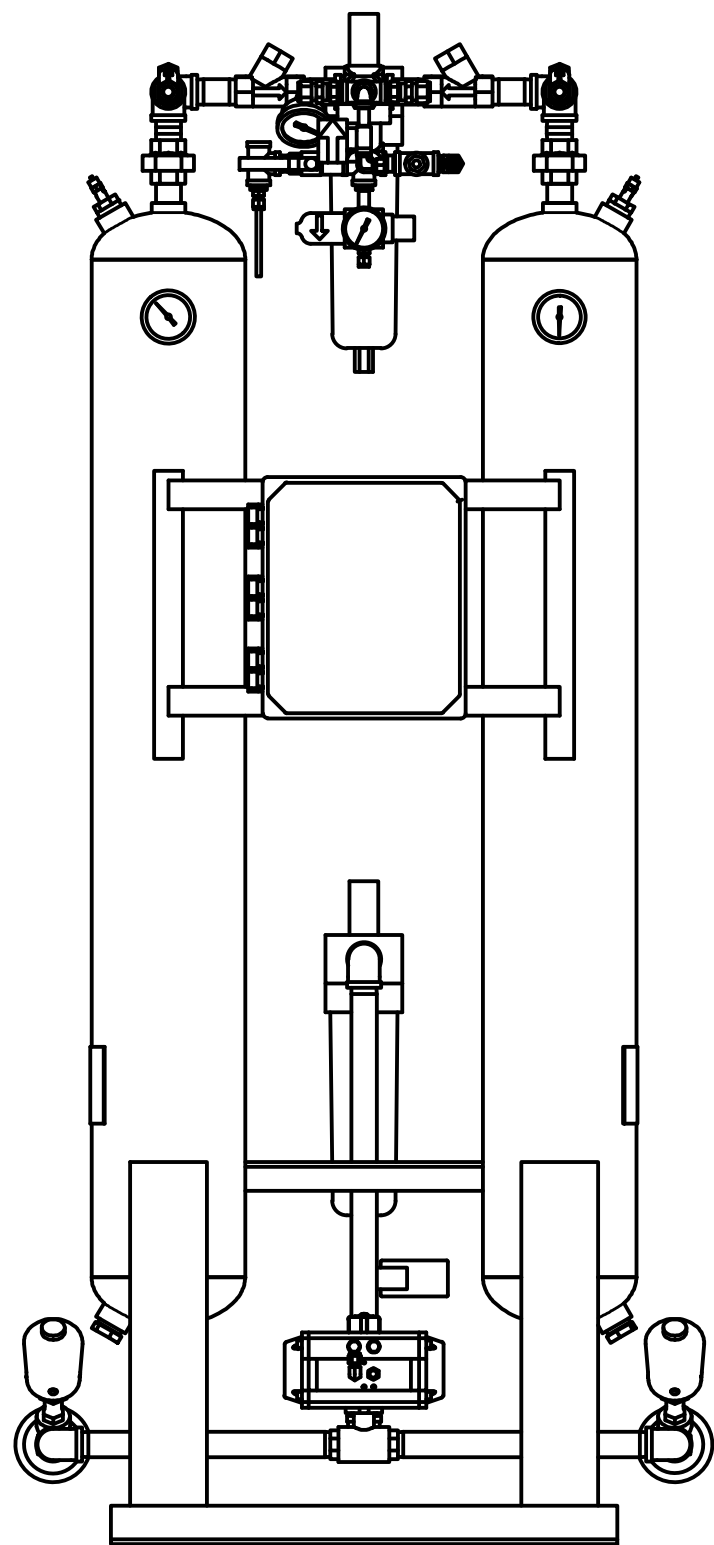
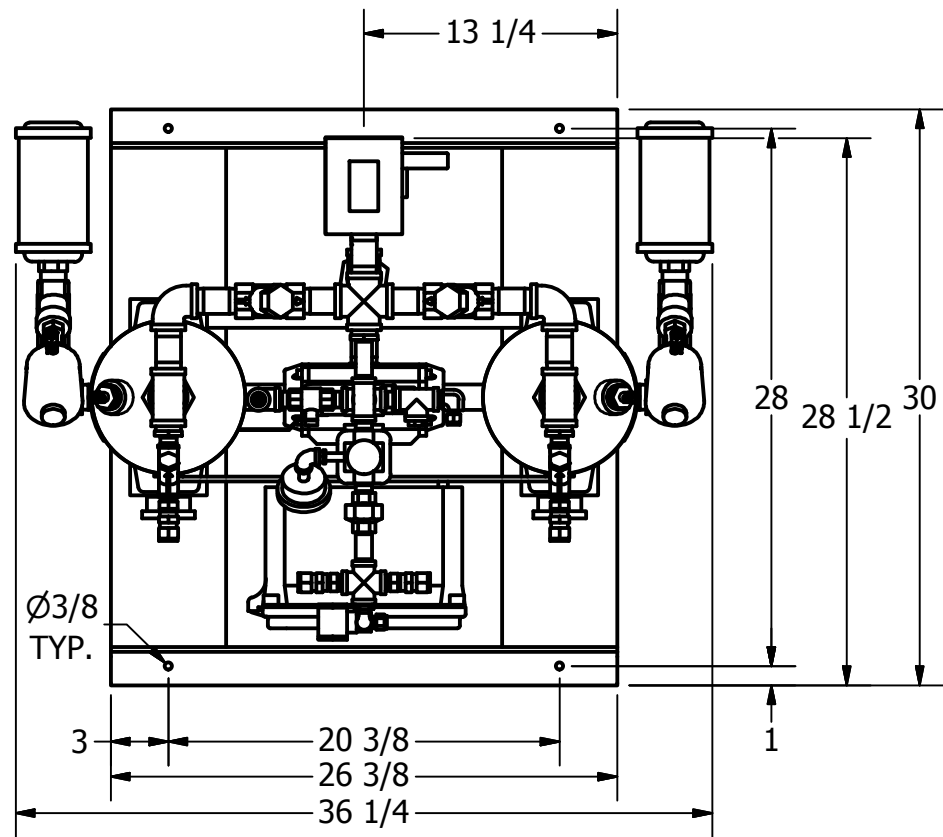
DATE: 2/24/2015

CHECKED:

DATE:

SCALE: N/A

SHEET: 1 OF 2



PRELIMINARY



HRL-0130-1 HEATLESS DESICCANT AIR DRYER GENERAL ARRANGEMENT

TOLERANCES UNLESS
OTHERWISE SPECIFIED:

FRACTIONS = ± 1/4 "
ANGLES = ± 3°
INCHES = ± 1/2 "
FINISH = 250

THE SPECIFICATIONS AND DRAWINGS DISCLOSED HEREIN ARE THE SOLE PROPERTY OF ALTEC AIR, AND SHALL NOT BE COPIED OR USED AS THE BASIS FOR SALE OR MANUFACTURE WITHOUT EXPRESS WRITTEN PERMISSION.

REVISION LOG

REV.	ECO.	DESCRIPTION	DATE	APPROVED
C	0876	PRODUCTION UPDATES	7/2/2019	WS

DRAWING NO.

AT20-453

REV.
C

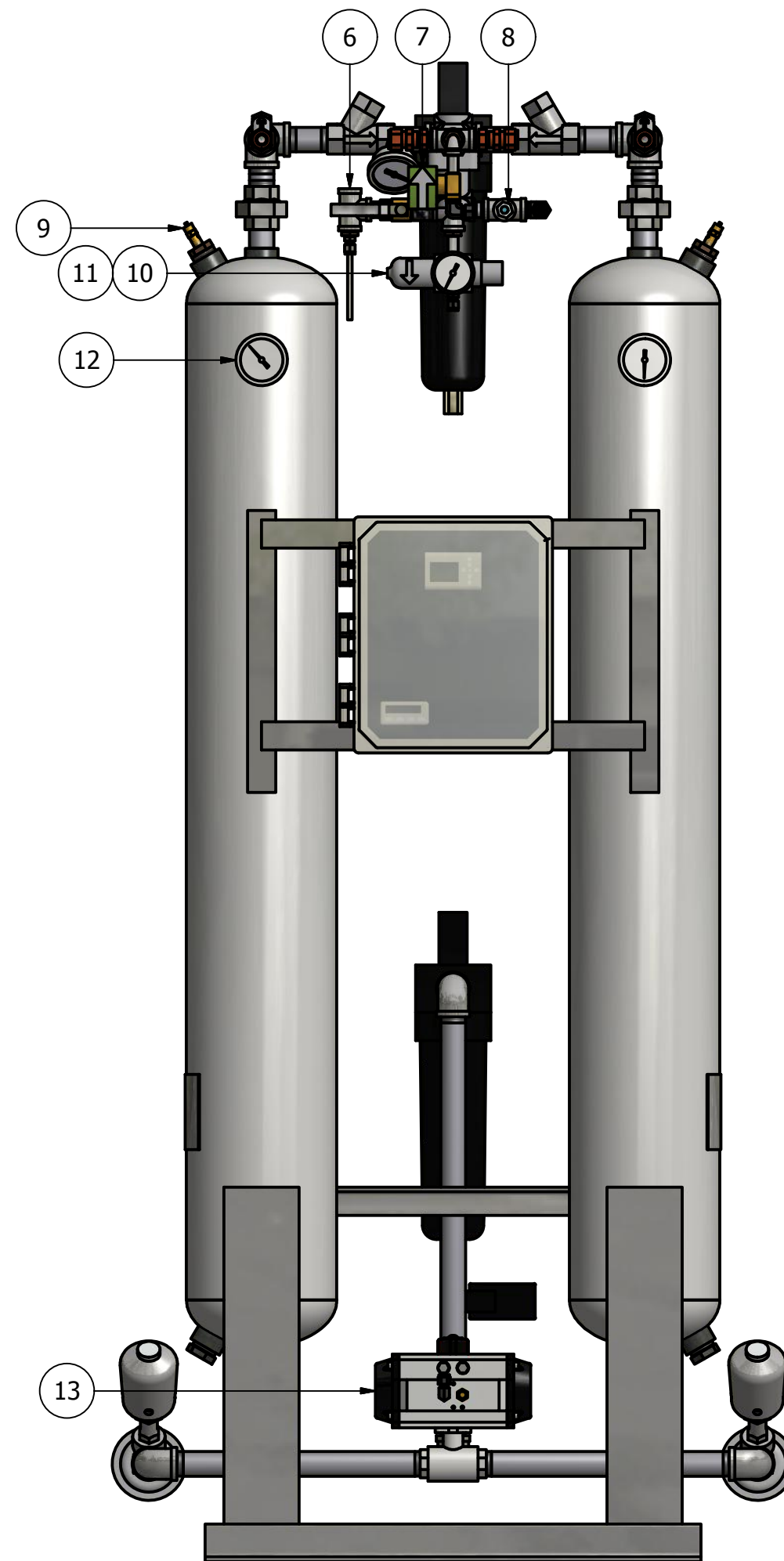
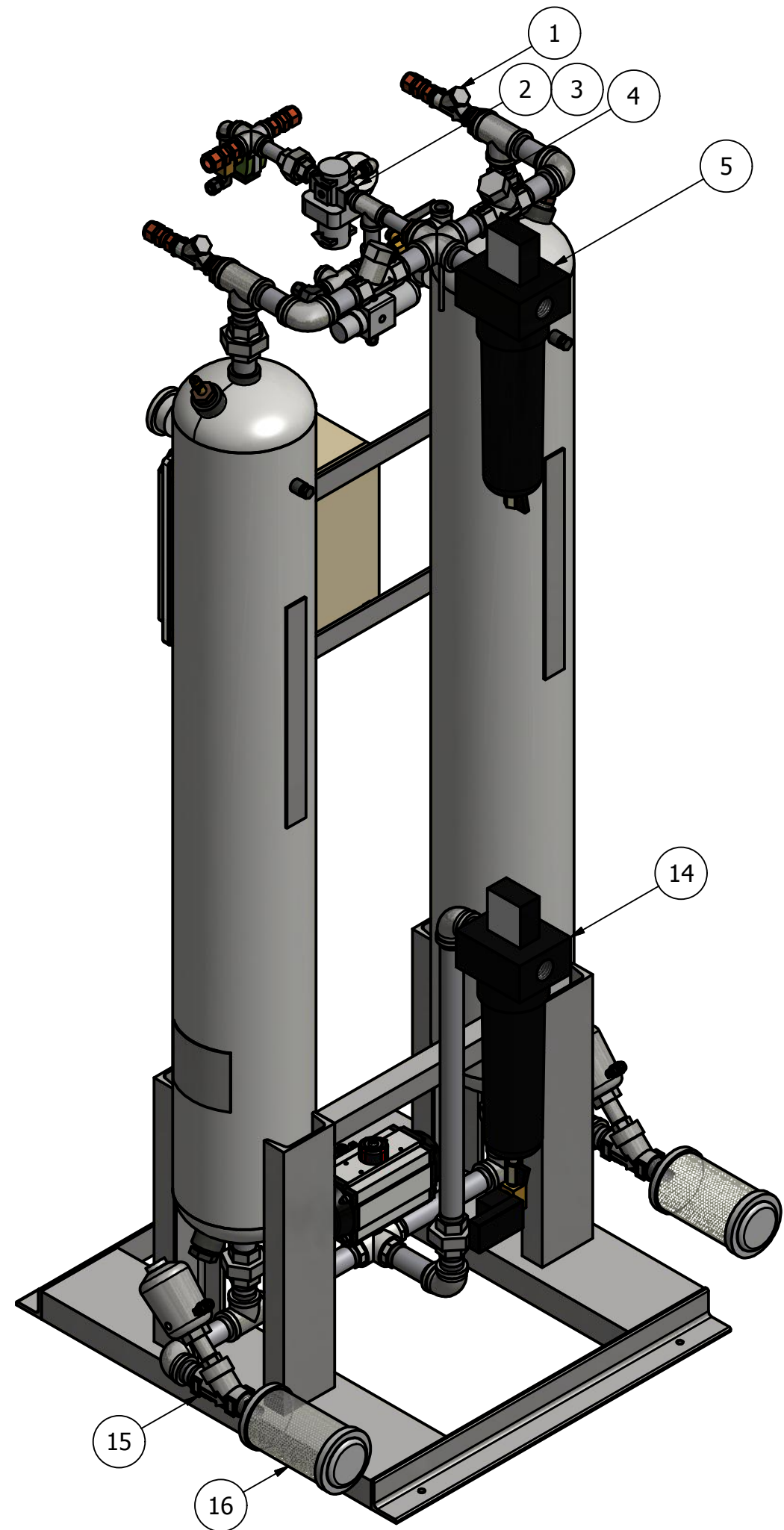
DRAWN: MR DATE: 2/24/2015
CHECKED: DATE:

SCALE: N/A

SHEET: 2 OF 2

PARTS LIST

ITEM	QTY	DESCRIPTION
1	2	CHECK VALVE, PURGE
2	1	PRESSURE REGULATOR, PURGE
3	1	PRESSURE GAUGE, PURGE
4	2	CHECK VALVE, OUTLET
5	1	PARTICULATE AFTER-FILTER
6	1	DEW POINT MONITOR (OPTIONAL)
7	1	SOLENOID VALVE, REPRESS
8	1	MOISTURE INDICATOR
9	2	RELIEF VALVE, TANK
10	1	PRESSURE REGULATOR, CONTROL
11	1	PRESSURE GAUGE, CONTROL
12	2	PRESSURE GAUGE, TANK
13	1	3-WAY BALL VALVE, INLET
14	1	COALESCER PRE-FILTER
15	2	ANGLE BODY VALVE, EXHAUST
16	2	MUFFLER, EXHAUST
17	150 LBS	DESICCANT



PRELIMINARY